

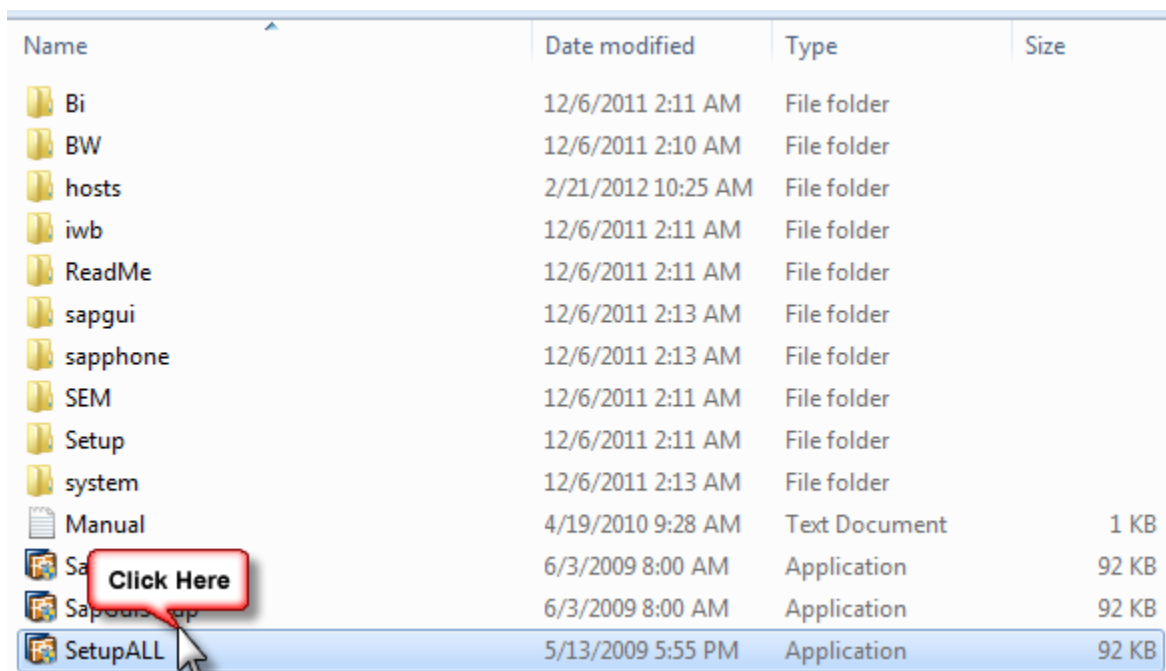
TUTORIAL : SAP GUI 7 Installation Guide

Folder PRES1 merupakan folder yang mengandungi installer sapgui 7.3

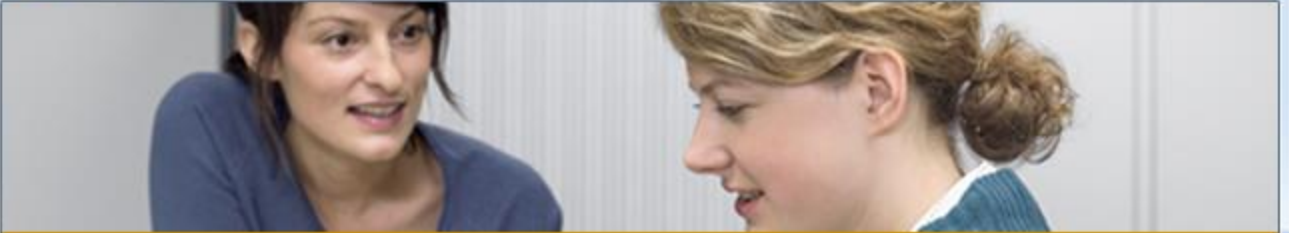
Sila masuk ke path seperti berikut :

PRES1/GUI/WINDOWS/WIN32

Ikut arahan seperti gambarajah dibawah untuk complete installation SAP GUI :~



Name	Date modified	Type	Size
Bi	12/6/2011 2:11 AM	File folder	
BW	12/6/2011 2:10 AM	File folder	
hosts	2/21/2012 10:25 AM	File folder	
iwb	12/6/2011 2:11 AM	File folder	
ReadMe	12/6/2011 2:11 AM	File folder	
sapgui	12/6/2011 2:13 AM	File folder	
sapphone	12/6/2011 2:13 AM	File folder	
SEM	12/6/2011 2:11 AM	File folder	
Setup	12/6/2011 2:11 AM	File folder	
system	12/6/2011 2:13 AM	File folder	
Manual	4/19/2010 9:28 AM	Text Document	1 KB
Sap	6/3/2009 8:00 AM	Application	92 KB
Sap	6/3/2009 8:00 AM	Application	92 KB
SetupALL	5/13/2009 5:55 PM	Application	92 KB



SAP NetWeaver

FRONT-END INSTALLER

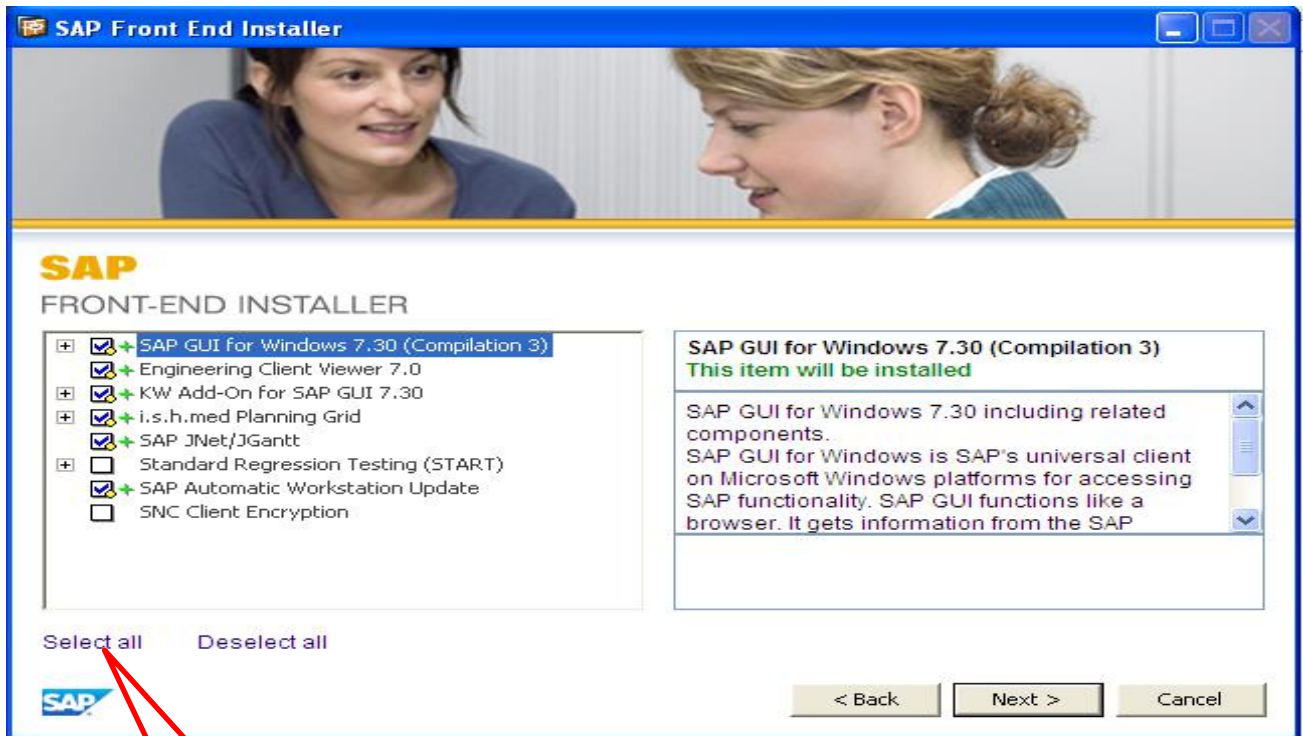
This wizard will help you install SAP Front-End Components.

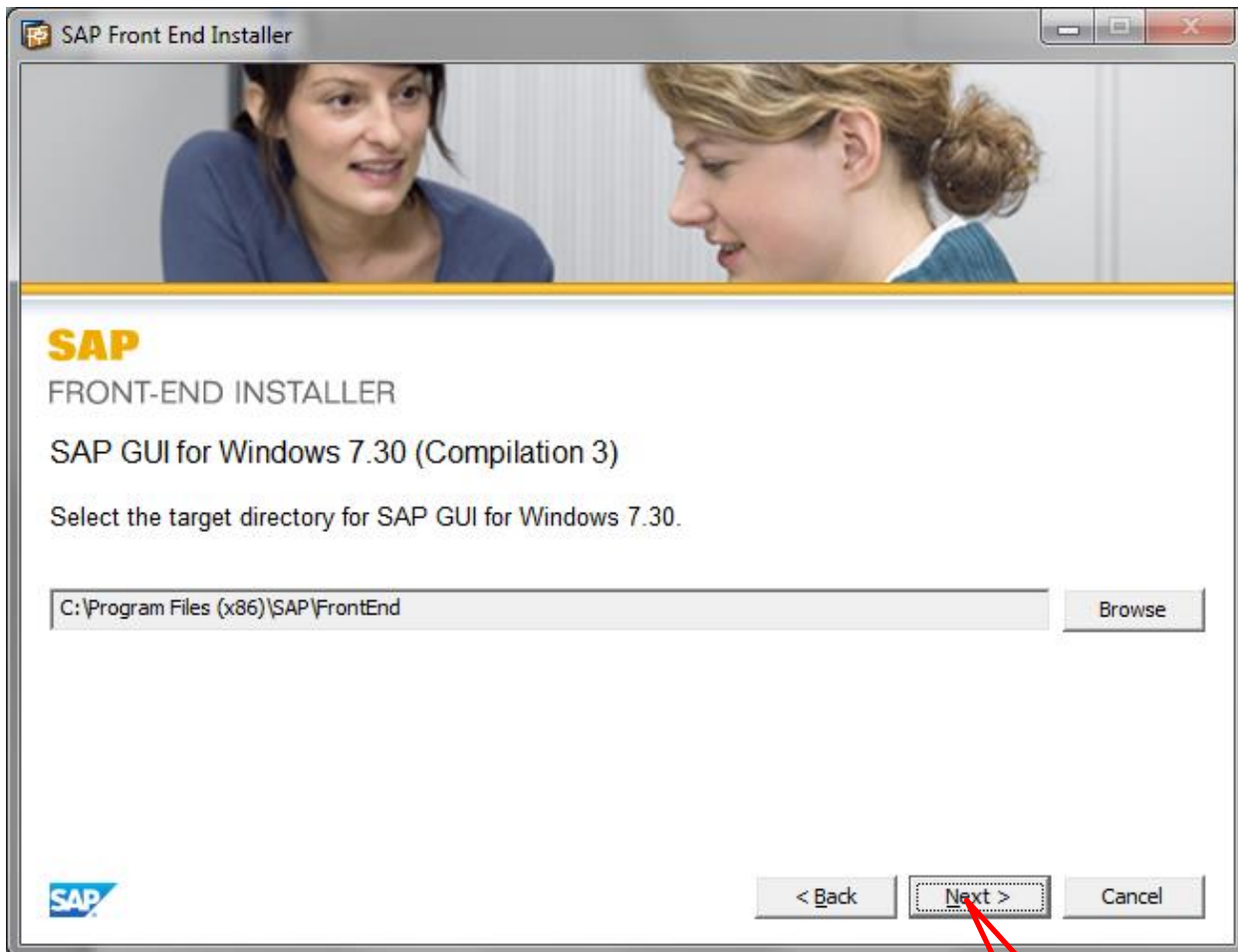
Please click 'Next' to proceed.

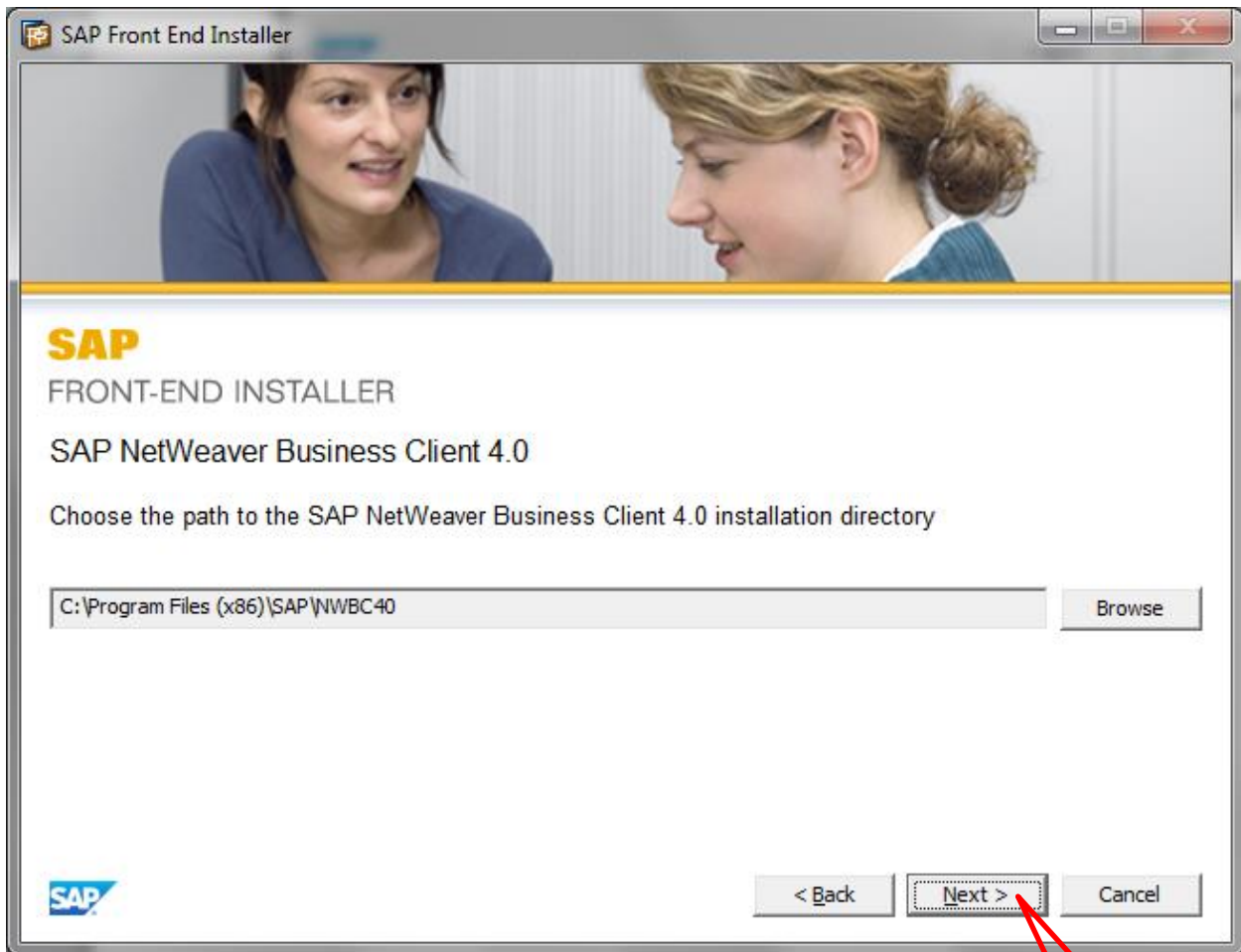


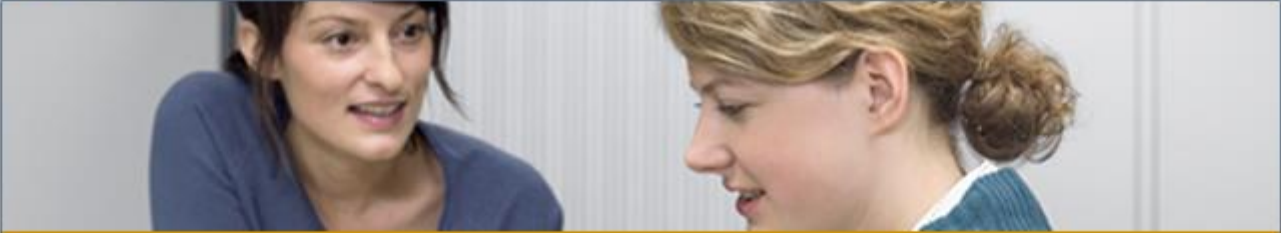
Click Here

Next > Cancel









SAP NetWeaver

FRONT-END INSTALLER

Business Explorer

Select the target directory for the Business Explorer

C:\Program Files\SAP\Business Explorer

Browse



< Back

Click Here

Next >

Cancel

SAP Front-End Installer



SAP NetWeaver

FRONT-END INSTALLER

Please wait while your component selection is being processed. This may take a few minutes.

Installing

C:\Program Files\SAP\FrontEnd\sapgui\gnwie.dll



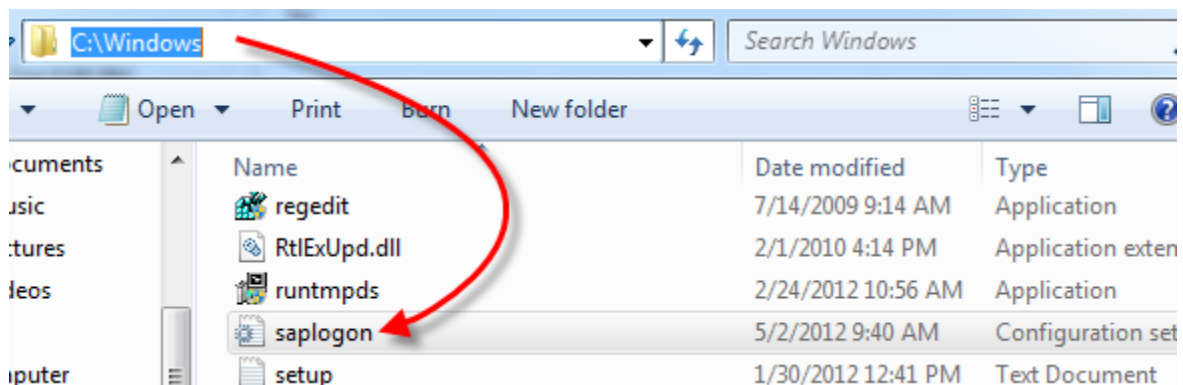
1%



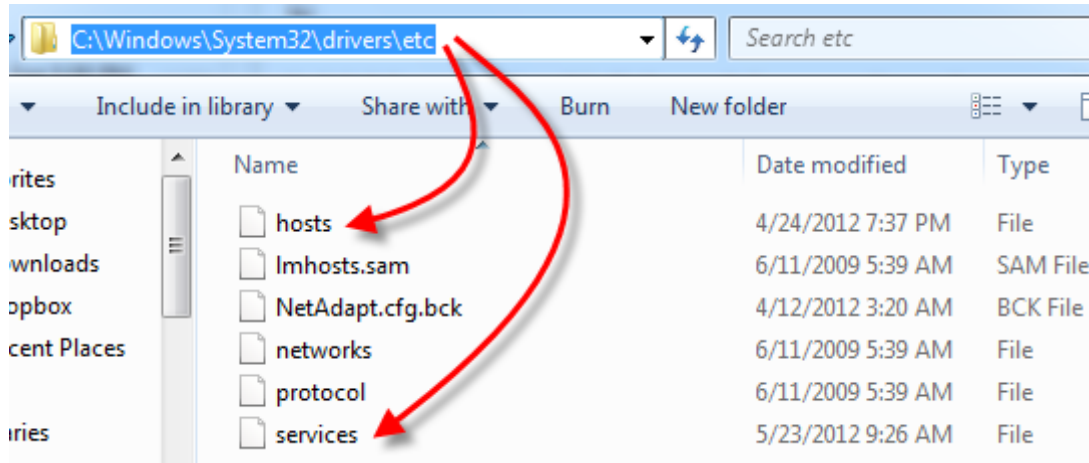


Antara beberapa perkara yang perlu diambil kira adalah :~

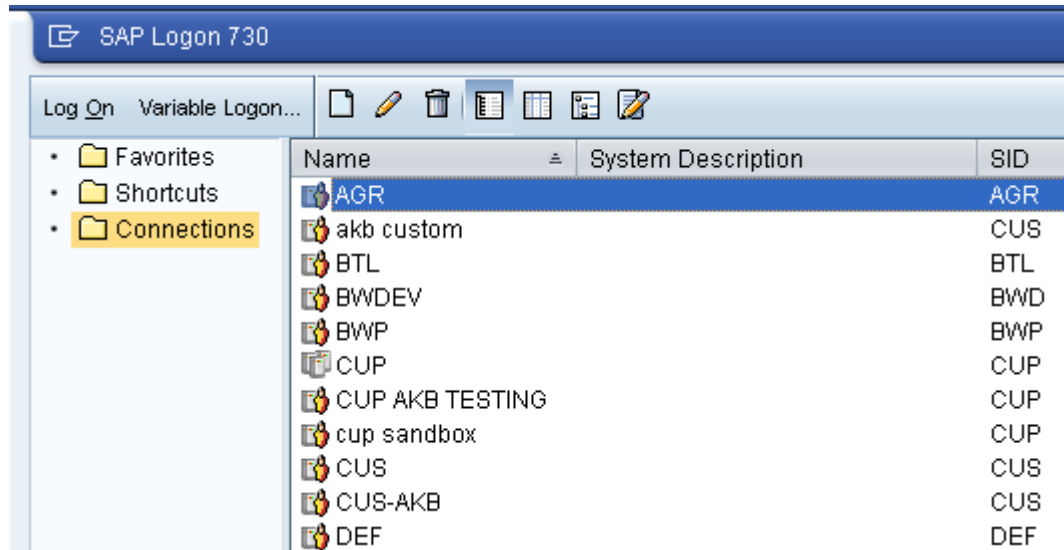
1. Pastikan **saplogon.INI** diletakkan pada **C:\Windows**



2. Pastikan **hosts & services** diletakkan pada **C:\Windows\System32\drivers\etc**



Pastikan bahawa terdapat senarai mengikut agensi masing-masing di setiap cawangan seperti gambarajah dibawah.



Terima kasih